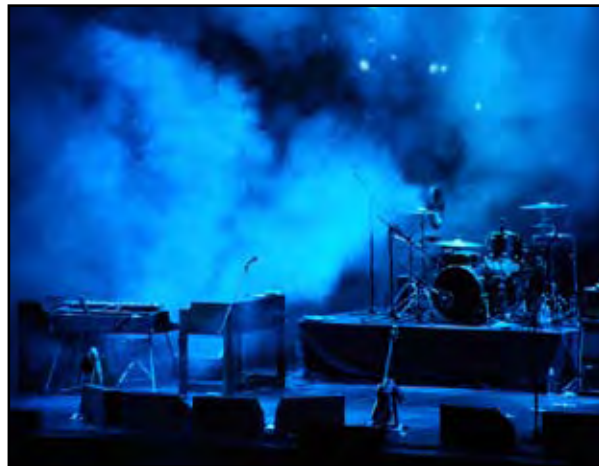


# Applications

## Live Sound

Switchcraft® offers a wide range of professional products for live sound applications. This includes a full line of high end direct boxes, featuring our brand new 900 Series with Phantom Lift (patent pending). Our RMAS line of mic splitters help provide accurate distribution of audio signals to FOH, monitor and recording consoles. All of our splitters can be ordered with dual isolated Jensen transformers providing the ultimate protection from ground loops in the most critical live sound applications. Of course, we're still the leading manufacturer of premium audio connectors used in live sound applications around the world.



## Recording

Professional recording engineers everywhere have come to recognize the StudioPatch® 9625 as the most dependable and flexible audio patchbay available. With EZ Norm technology, the ability to change signal flow from the front of each channel with the flip of a switch makes adding and reconfiguring gear a snap. Our PT Series I/O panels are a perfect solution for anyone requiring front-of-rack access to outboard gear and recording consoles. All of our breakout cables feature Switchcraft® all metal XLR and 1/4" ends, and premium double-shielded multi-pair cabling making them the most trusted in the industry.

## Broadcast

Today's high definition broadcast facilities require the most technologically advanced equipment to ensure high quality distribution of audio and video signals. The MMVP Micro Video Patchbay offers the highest level of density (96 patchpoints in 1RU) while exceeding SMPTE 424M specifications. Our flagship audio patchbay, the EZ Norm Series, enables signal flow to be changed from the front of each channel using a standard screwdriver. We also offer a broad line of patchbay accessory products, including fully molded patchcords, insertion/withdrawal tools, terminating/looping plugs and adapters.



## Systems Integration

Switchcraft® offers the most comprehensive range of audio, video and data interconnect solutions for systems integration and installation in houses of worship, educational/corporate facilities, stadiums and other venues. The EH Series is a line of panel mount connectors and rack panels for integrating audio, video and data signals. AAA XLR connectors feature an all metal, two piece design, making them the most durable and fastest to assemble XLR connectors in the world! Our broad line of audio and video patchbays are also widely recognized throughout the systems integration/installation industry.

World H  
5555 N. E  
Chicago,  
Phone: 77  
Fax: 773-

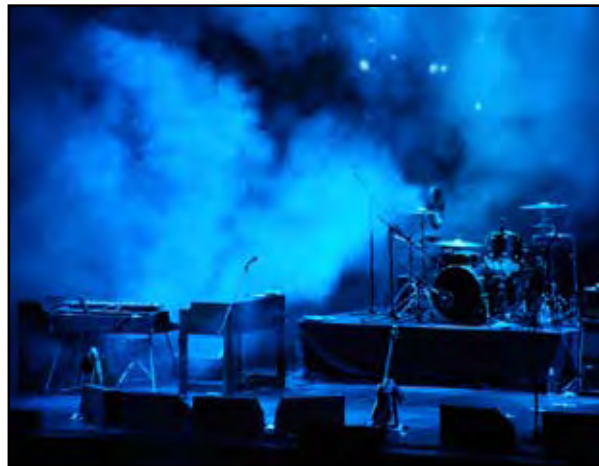
Internati  
16, Challe  
Portsmou  
Phone: +4  
Fax: +44

www.swit

# Applications

## Live Sound

Switchcraft® offers a wide range of professional products for live sound applications. This includes a full line of high end direct boxes, featuring our brand new 900 Series with Phantom Lift (patent pending). Our RMAS line of mic splitters help provide accurate distribution of audio signals to FOH, monitor and recording consoles. All of our splitters can be ordered with dual isolated Jensen transformers providing the ultimate protection from ground loops in the most critical live sound applications. Of course, we're still the leading manufacturer of premium audio connectors used in live sound applications around the world.



## Recording

Professional recording engineers everywhere have come to recognize the StudioPatch® 9625 as the most dependable and flexible audio patchbay available. With EZ Norm technology, the ability to change signal flow from the front of each channel with the flip of a switch makes adding and reconfiguring gear a snap. Our PT Series I/O panels are a perfect solution for anyone requiring front-of-rack access to outboard gear and recording consoles. All of our breakout cables feature Switchcraft® all metal XLR and 1/4" ends, and premium double-shielded multi-pair cabling making them the most trusted in the industry.

## Broadcast

Today's high definition broadcast facilities require the most technologically advanced equipment to ensure high quality distribution of audio and video signals. The MMVP Micro Video Patchbay offers the highest level of density (96 patchpoints in 1RU) while exceeding SMPTE 424M specifications. Our flagship audio patchbay, the EZ Norm Series, enables signal flow to be changed from the front of each channel using a standard screwdriver. We also offer a broad line of patchbay accessory products, including fully molded patchcords, insertion/withdrawal tools, terminating/looping plugs and adapters.



## Systems Integration

Switchcraft® offers the most comprehensive range of audio, video and data interconnect solutions for systems integration and installation in houses of worship, educational/corporate facilities, stadiums and other venues. The EH Series is a line of panel mount connectors and rack panels for integrating audio, video and data signals. AAA XLR connectors feature an all metal, two piece design, making them the most durable and fastest to assemble XLR connectors in the world! Our broad line of audio and video patchbays are also widely recognized throughout the systems integration/installation industry.

World H  
5555 N. E  
Chicago,  
Phone: 77  
Fax: 773-

Internati  
16, Challe  
Portsmou  
Phone: +4  
Fax: +44

www.swit

# Applications

## Live Sound

Switchcraft® offers a wide range of professional products for live sound applications. This includes a full line of high end direct boxes, featuring our brand new 900 Series with Phantom Lift (patent pending). Our RMAS line of mic splitters help provide accurate distribution of audio signals to FOH, monitor and recording consoles. All of our splitters can be ordered with dual isolated Jensen transformers providing the ultimate protection from ground loops in the most critical live sound applications. Of course, we're still the leading manufacturer of premium audio connectors used in live sound applications around the world.

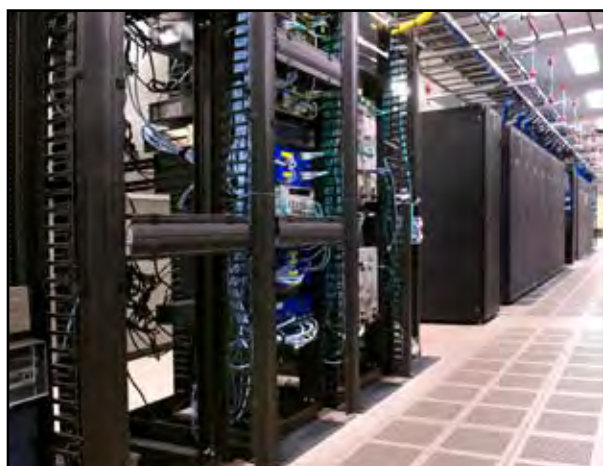


## Recording

Professional recording engineers everywhere have come to recognize the StudioPatch® 9625 as the most dependable and flexible audio patchbay available. With EZ Norm technology, the ability to change signal flow from the front of each channel with the flip of a switch makes adding and reconfiguring gear a snap. Our PT Series I/O panels are a perfect solution for anyone requiring front-of-rack access to outboard gear and recording consoles. All of our breakout cables feature Switchcraft® all metal XLR and 1/4" ends, and premium double-shielded multi-pair cabling making them the most trusted in the industry.

## Broadcast

Today's high definition broadcast facilities require the most technologically advanced equipment to ensure high quality distribution of audio and video signals. The MMVP Micro Video Patchbay offers the highest level of density (96 patchpoints in 1RU) while exceeding SMPTE 424M specifications. Our flagship audio patchbay, the EZ Norm Series, enables signal flow to be changed from the front of each channel using a standard screwdriver. We also offer a broad line of patchbay accessory products, including fully molded patchcords, insertion/withdrawal tools, terminating/looping plugs and adapters.



## Systems Integration

Switchcraft® offers the most comprehensive range of audio, video and data interconnect solutions for systems integration and installation in houses of worship, educational/corporate facilities, stadiums and other venues. The EH Series is a line of panel mount connectors and rack panels for integrating audio, video and data signals. AAA XLR connectors feature an all metal, two piece design, making them the most durable and fastest to assemble XLR connectors in the world! Our broad line of audio and video patchbays are also widely recognized throughout the systems integration/installation industry.

World H  
5555 N. E  
Chicago,  
Phone: 77  
Fax: 773-

Internati  
16, Challe  
Portsmou  
Phone: +4  
Fax: +44

www.swit

# Switchcraft® Pro Audio

## JACKS & PLUGS

## CABLE ASSEMBLIES

### 3.5mm (1/8" Mini) Jacks & Plugs

### Other Jacks & Plugs

### DB25 Breakout Cables and 8-Channel Snakes

### Audio & Video Patchcords

### MMVP M Patch



Applications

Professional 3.5mm products for MP3 players, headphones, wireless microphone systems and other pro audio / video gear

High quality 1/4" commercial, 1/4" long frame, phono and Bantam/TT jacks and plugs for musical instruments, audio patching and other pro audio gear

Multi-channel interconnect solutions for pro audio gear including patchbays, splitter systems, stage boxes, I/O panels, etc.

Premium audio and video patchcords for broadcast and pro audio

High density, patchbays meet specifications for patching in broadcast production, etc.

Features / Benefits

- Rugged all metal construction
- Heavy duty cable clamp
- Plugs feature a one piece tip rod which means the plug tip will always stay attached to the plug body and will never break off in your equipment
- Large solder terminals for easy termination

- Rugged all metal construction
- Heavy duty cable clamp
- 1/4" plugs feature a one piece tip rod which means the plug tip will always stay attached to the plug body and will never break off in your equipment
- Large solder terminals for easy termination
- Phono solid center pin

- Rugged all metal Switchcraft® connectors
- 10 ft. standard cable length with 18 inch fanouts
- 110 Ohm cable for analog or AES/EBU digital audio
- Double shielded multi-pair cabling
- 4-40 and M3 jackscrews included on all DB25 connectors
- Yamaha and TASCAM DTRS pinouts (DB25)

- Durable, overmolded plugs
- 110 Ohm cabling for analog or AES/EBU digital audio
- 75 Ohm low capacitance cabling for HD video
- Plugs made of nickel plated copper alloy won't tarnish or need polishing
- High quality Switchcraft® plug ends

- Meets SMP specification
- Rated at 3000 lbs
- Utilizes industry standard DIN 1.0/2.3 connections
- Screw in, all metal design with no solder in mobile applications
- Based on the most reliable, patented design of our MVJ video jacks
- Cable tie bar management
- Snap in design
- Rated to 2000 lbs withdrawal

Options

- Black or nickel plated housing/handles
- Gold or nickel plated (plug)
- Straight or right angle (plug)
- Locking or non-locking (plug)
- Large cable opening
- Cable mount extension jack

- Metal or plastic handles
- Solder or screw terminals
- Large cable opening
- Cable mount extension jack
- Straight or right angle (plug)
- Two or three conductor (TS or TRS)
- Brass or nickel plated (1/4" or TT/Bantam)
- Black or nickel plated housing/handles (phono)
- Gold or nickel plated (phono)

- DB25 Breakout Cables:**
- DB25 to DB25, XLR or 1/4" TRS
  - Eight Channel DB25 Insert Cable - dual DB25 to eight 1/4" TRS
- DB25 Modular Cable Ends:**
- Female DB25 to XLR or 1/4" TRS
- 8-Channel Audio Snakes:**
- XLR, 1/4" TS, 1/4" TRS (plug or extension jack) and phono
  - Black finish / gold plated contacts (XLR and phono)

- Wide variety of cable colors
- Available in standard lengths of 1-10 ft.
- Dual Bantam/TT available for RS422 and stereo patching (stereo spaced TT patchbays only)

- 1RU, 1.5RU heights
- Normalled, terminated, terminated
- Color coding for easy channel identification
- Available with distinguishable audio from video
- Accessory DIN 1.0/2.3 withdrawal 1.0/2.3 cable connectors video cable

# Switchcraft® Pro Audio

## JACKS & PLUGS

## CABLE ASSEMBLIES

### 3.5mm (1/8" Mini) Jacks & Plugs

### Other Jacks & Plugs

### DB25 Breakout Cables and 8-Channel Snakes

### Audio & Video Patchcords

### MMVP M Patch



Applications

Professional 3.5mm products for MP3 players, headphones, wireless microphone systems and other pro audio / video gear

High quality 1/4" commercial, 1/4" long frame, phono and Bantam/TT jacks and plugs for musical instruments, audio patching and other pro audio gear

Multi-channel interconnect solutions for pro audio gear including patchbays, splitter systems, stage boxes, I/O panels, etc.

Premium audio and video patchcords for broadcast and pro audio

High density, patchbays meet specifications for patching in broadcast production, etc.

Features / Benefits

- Rugged all metal construction
- Heavy duty cable clamp
- Plugs feature a one piece tip rod which means the plug tip will always stay attached to the plug body and will never break off in your equipment
- Large solder terminals for easy termination

- Rugged all metal construction
- Heavy duty cable clamp
- 1/4" plugs feature a one piece tip rod which means the plug tip will always stay attached to the plug body and will never break off in your equipment
- Large solder terminals for easy termination
- Phono solid center pin

- Rugged all metal Switchcraft® connectors
- 10 ft. standard cable length with 18 inch fanouts
- 110 Ohm cable for analog or AES/EBU digital audio
- Double shielded multi-pair cabling
- 4-40 and M3 jackscrews included on all DB25 connectors
- Yamaha and TASCAM DTRS pinouts (DB25)

- Durable, overmolded plugs
- 110 Ohm cabling for analog or AES/EBU digital audio
- 75 Ohm low capacitance cabling for HD video
- Plugs made of nickel plated copper alloy won't tarnish or need polishing
- High quality Switchcraft® plug ends

- Meets SMP specification
- Rated at 3000 lbs
- Utilizes industry standard DIN 1.0/2.3 connections
- Screw in, all metal design with no solder in mobile applications
- Based on the most reliable, patented design of our MVJ video jacks
- Cable tie bar management
- Snap in design
- Rated to 2000 lbs withdrawal

Options

- Black or nickel plated housing/handles
- Gold or nickel plated (plug)
- Straight or right angle (plug)
- Locking or non-locking (plug)
- Large cable opening
- Cable mount extension jack

- Metal or plastic handles
- Solder or screw terminals
- Large cable opening
- Cable mount extension jack
- Straight or right angle (plug)
- Two or three conductor (TS or TRS)
- Brass or nickel plated (1/4" or TT/Bantam)
- Black or nickel plated housing/handles (phono)
- Gold or nickel plated (phono)

- DB25 Breakout Cables:**
- DB25 to DB25, XLR or 1/4" TRS
  - Eight Channel DB25 Insert Cable - dual DB25 to eight 1/4" TRS
- DB25 Modular Cable Ends:**
- Female DB25 to XLR or 1/4" TRS
- 8-Channel Audio Snakes:**
- XLR, 1/4" TS, 1/4" TRS (plug or extension jack) and phono
  - Black finish / gold plated contacts (XLR and phono)

- Wide variety of cable colors
- Available in standard lengths of 1-10 ft.
- Dual Bantam/TT available for RS422 and stereo patching (stereo spaced TT patchbays only)

- 1RU, 1.5RU heights
- Normalled, terminated, terminated
- Color coding for easy channel identification
- Available with distinguishable audio from video
- Accessory DIN 1.0/2.3 withdrawal 1.0/2.3 cable connectors video cable

# Switchcraft® Pro Audio

## JACKS & PLUGS

## CABLE ASSEMBLIES

### 3.5mm (1/8" Mini) Jacks & Plugs

### Other Jacks & Plugs

### DB25 Breakout Cables and 8-Channel Snakes

### Audio & Video Patchcords

### MMVP M Patch



Applications

Professional 3.5mm products for MP3 players, headphones, wireless microphone systems and other pro audio / video gear

High quality 1/4" commercial, 1/4" long frame, phono and Bantam/TT jacks and plugs for musical instruments, audio patching and other pro audio gear

Multi-channel interconnect solutions for pro audio gear including patchbays, splitter systems, stage boxes, I/O panels, etc.

Premium audio and video patchcords for broadcast and pro audio

High density, patchbays meet specifications for patching in broadcast production, etc.

Features / Benefits

- Rugged all metal construction
- Heavy duty cable clamp
- Plugs feature a one piece tip rod which means the plug tip will always stay attached to the plug body and will never break off in your equipment
- Large solder terminals for easy termination

- Rugged all metal construction
- Heavy duty cable clamp
- 1/4" plugs feature a one piece tip rod which means the plug tip will always stay attached to the plug body and will never break off in your equipment
- Large solder terminals for easy termination
- Phono solid center pin

- Rugged all metal Switchcraft® connectors
- 10 ft. standard cable length with 18 inch fanouts
- 110 Ohm cable for analog or AES/EBU digital audio
- Double shielded multi-pair cabling
- 4-40 and M3 jackscrews included on all DB25 connectors
- Yamaha and TASCAM DTRS pinouts (DB25)

- Durable, overmolded plugs
- 110 Ohm cabling for analog or AES/EBU digital audio
- 75 Ohm low capacitance cabling for HD video
- Plugs made of nickel plated copper alloy won't tarnish or need polishing
- High quality Switchcraft® plug ends

- Meets SMP specification
- Rated at 3000 lbs
- Utilizes industry standard DIN 1.0/2.3 connections
- Screw in, all metal design with no solder in mobile applications
- Based on the most reliable, patented design of our MVJ video jacks
- Cable tie bar management
- Snap in design
- Rated to 2000 lbs withdrawal

Options

- Black or nickel plated housing/handles
- Gold or nickel plated (plug)
- Straight or right angle (plug)
- Locking or non-locking (plug)
- Large cable opening
- Cable mount extension jack

- Metal or plastic handles
- Solder or screw terminals
- Large cable opening
- Cable mount extension jack
- Straight or right angle (plug)
- Two or three conductor (TS or TRS)
- Brass or nickel plated (1/4" or TT/Bantam)
- Black or nickel plated housing/handles (phono)
- Gold or nickel plated (phono)

- DB25 Breakout Cables:**
- DB25 to DB25, XLR or 1/4" TRS
  - Eight Channel DB25 Insert Cable - dual DB25 to eight 1/4" TRS
- DB25 Modular Cable Ends:**
- Female DB25 to XLR or 1/4" TRS
- 8-Channel Audio Snakes:**
- XLR, 1/4" TS, 1/4" TRS (plug or extension jack) and phono
  - Black finish / gold plated contacts (XLR and phono)

- Wide variety of cable colors
- Available in standard lengths of 1-10 ft.
- Dual Bantam/TT available for RS422 and stereo patching (stereo spaced TT patchbays only)

- 1RU, 1.5RU heights
- Normalled, terminated, terminated
- Color coding for easy channel identification
- Available with distinguishable audio from video
- Accessory DIN 1.0/2.3 withdrawal 1.0/2.3 cable connectors video cable

# Switchcraft® Pro Audio

## JACKS & PLUGS

## CABLE ASSEMBLIES

### 3.5mm (1/8" Mini) Jacks & Plugs

### Other Jacks & Plugs

### DB25 Breakout Cables and 8-Channel Snakes

### Audio & Video Patchcords

### MMVP M Patch



Applications

Professional 3.5mm products for MP3 players, headphones, wireless microphone systems and other pro audio / video gear

High quality 1/4" commercial, 1/4" long frame, phono and Bantam/TT jacks and plugs for musical instruments, audio patching and other pro audio gear

Multi-channel interconnect solutions for pro audio gear including patchbays, splitter systems, stage boxes, I/O panels, etc.

Premium audio and video patchcords for broadcast and pro audio

High density, patchbays meet specifications for patching in broadcast production, etc.

Features / Benefits

- Rugged all metal construction
- Heavy duty cable clamp
- Plugs feature a one piece tip rod which means the plug tip will always stay attached to the plug body and will never break off in your equipment
- Large solder terminals for easy termination

- Rugged all metal construction
- Heavy duty cable clamp
- 1/4" plugs feature a one piece tip rod which means the plug tip will always stay attached to the plug body and will never break off in your equipment
- Large solder terminals for easy termination
- Phono solid center pin

- Rugged all metal Switchcraft® connectors
- 10 ft. standard cable length with 18 inch fanouts
- 110 Ohm cable for analog or AES/EBU digital audio
- Double shielded multi-pair cabling
- 4-40 and M3 jackscrews included on all DB25 connectors
- Yamaha and TASCAM DTRS pinouts (DB25)

- Durable, overmolded plugs
- 110 Ohm cabling for analog or AES/EBU digital audio
- 75 Ohm low capacitance cabling for HD video
- Plugs made of nickel plated copper alloy won't tarnish or need polishing
- High quality Switchcraft® plug ends

- Meets SMP specification
- Rated at 3000 lbs
- Utilizes industry standard DIN 1.0/2.3 connections
- Screw in, all metal design with no solder in mobile applications
- Based on the most reliable, patented design of our MVJ video jacks
- Cable tie bar management
- Snap in design
- Rated to 2000 lbs withdrawal

Options

- Black or nickel plated housing/handles
- Gold or nickel plated (plug)
- Straight or right angle (plug)
- Locking or non-locking (plug)
- Large cable opening
- Cable mount extension jack

- Metal or plastic handles
- Solder or screw terminals
- Large cable opening
- Cable mount extension jack
- Straight or right angle (plug)
- Two or three conductor (TS or TRS)
- Brass or nickel plated (1/4" or TT/Bantam)
- Black or nickel plated housing/handles (phono)
- Gold or nickel plated (phono)

- DB25 Breakout Cables:**
- DB25 to DB25, XLR or 1/4" TRS
  - Eight Channel DB25 Insert Cable - dual DB25 to eight 1/4" TRS
- DB25 Modular Cable Ends:**
- Female DB25 to XLR or 1/4" TRS
- 8-Channel Audio Snakes:**
- XLR, 1/4" TS, 1/4" TRS (plug or extension jack) and phono
  - Black finish / gold plated contacts (XLR and phono)

- Wide variety of cable colors
- Available in standard lengths of 1-10 ft.
- Dual Bantam/TT available for RS422 and stereo patching (stereo spaced TT patchbays only)

- 1RU, 1.5RU heights
- Normalled, terminated, terminated
- Color coding for easy channel identification
- Available with distinguishable audio from video
- Accessory DIN 1.0/2.3 withdrawal 1.0/2.3 cable connectors video cable

# Applications

## Live Sound

Switchcraft® offers a wide range of professional products for live sound applications. This includes a full line of high end direct boxes, featuring our brand new 900 Series with Phantom Lift (patent pending). Our RMAS line of mic splitters help provide accurate distribution of audio signals to FOH, monitor and recording consoles. All of our splitters can be ordered with dual isolated Jensen transformers providing the ultimate protection from ground loops in the most critical live sound applications. Of course, we're still the leading manufacturer of premium audio connectors used in live sound applications around the world.



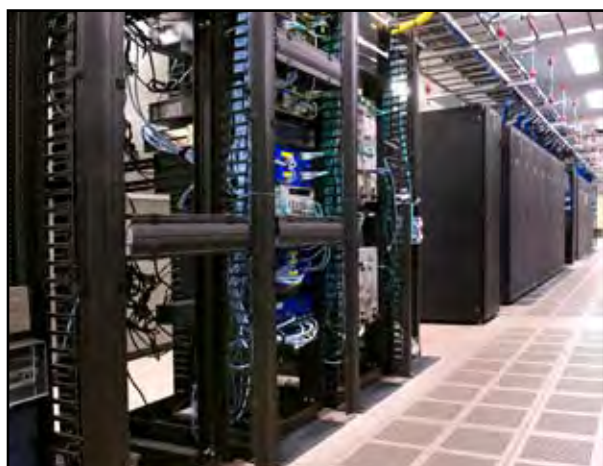
## Recording

Professional recording engineers everywhere have come to recognize the StudioPatch® 9625 as the most dependable and flexible audio patchbay available. With EZ Norm technology, the ability to change signal flow from the front of each channel with the flip of a switch makes adding and reconfiguring gear a snap. Our PT Series I/O panels are a perfect solution for anyone requiring front-of-rack access to outboard gear and recording consoles. All of our breakout cables feature Switchcraft® all metal XLR and 1/4" ends, and premium double-shielded multi-pair cabling making them the most trusted in the industry.



## Broadcast

Today's high definition broadcast facilities require the most technologically advanced equipment to ensure high quality distribution of audio and video signals. The MMVP Micro Video Patchbay offers the highest level of density (96 patchpoints in 1RU) while exceeding SMPTE 424M specifications. Our flagship audio patchbay, the EZ Norm Series, enables signal flow to be changed from the front of each channel using a standard screwdriver. We also offer a broad line of patchbay accessory products, including fully molded patchcords, insertion/withdrawal tools, terminating/looping plugs and adapters.



## Systems Integration

Switchcraft® offers the most comprehensive range of audio, video and data interconnect solutions for systems integration and installation in houses of worship, educational/corporate facilities, stadiums and other venues. The EH Series is a line of panel mount connectors and rack panels for integrating audio, video and data signals. AAA XLR connectors feature an all metal, two piece design, making them the most durable and fastest to assemble XLR connectors in the world! Our broad line of audio and video patchbays are also widely recognized throughout the systems integration/installation industry.

World H  
5555 N. E  
Chicago,  
Phone: 77  
Fax: 773-

Internati  
16, Challe  
Portsmou  
Phone: +4  
Fax: +44

www.swit